

INSTRUCTIONS FOR SUBMITTING PAPERS TO THE JOURNAL OF THE NEVADA WATER RESOURCES ASSOCIATION

Papers submitted for publication in the Journal of the Nevada Water Resources Association (JNWRA) must follow the format described below. Authors are strongly encouraged to seek technical and editorial review of papers prior to submission. Papers must be submitted in electronic form and emailed to admin@nvwra.org. Papers should be in Microsoft Word¹ format or, if not available, in a program that can be read by Microsoft Word. Tables should be in Word¹ or Excel¹. Figures should be presented as either JPEG or GIF. Please use the available template for submissions to help ensure uniformity and limit the need for editing.

Titles - Title should be concise and precise, and not exceed 120 characters and spaces in length. Use 18-pt font size and bold characters. The title should be centered on the page. Use APA Title case.

Authors - Each author's full name, affiliation, and mailing address should appear on the first page of the paper below the title. Use 14-pt font size and capital letters for the authors' names and 12-pt font size for the affiliations and addresses. All letters should be in normal weight. Multiple authors should be separated with a semicolon.

Abstracts - An abstract must accompany each paper. The abstract should be no longer than 400 words and should be a concise summary of the essential information of the paper. Use 12-pt font size and normal weight characters for text. Abstracts need to be able to "stand alone" from the rest of the manuscript. Up to four keywords should be included after the abstract.

Manuscripts - Manuscripts should be well-organized, concise, and pertain to the topic(s) discussed in the abstract and presentation. The format should include the title, author(s), abstract, introduction, methods, results, discussion, conclusion/summary, and references. The paper should be in Times New Roman font.

Text - All manuscript text should be in 12-pt font size, normal-weight characters and Times New Roman font. The manuscript should be single-spaced, with 1-inch margins. The manuscript should be divided into sections logically, using 12-pt font size and bold capital letters for section headings. Subheadings should be in 12-pt font size and bold, characters. Note change: JNWRA will now allow either metric or English units, based on the preference of the author. JNWRA prefers to have both units expressed, such as English with metric in parentheses (1 mi (0.62 km)), but this is up to the author's discretion depending on the general use of the presented information. Make sure all superscript and subscript numbers are clear.

All equations should be typed and in proper format. Equations should be numbered in the right side of text, such as

$$E = MC^2 \qquad (1)$$

Prepublication Review and Revision - Authors are encouraged to have colleagues carefully review their manuscripts for technical merit and editorial consistency prior to submission, but submitted manuscripts will be reviewed for technical and editorial content by the journal. Manuscripts will be reviewed for content, merit and publication standards by the editors for the JNWRA before being sent for review. Once the editors have determined a manuscript is suitable for the journal, the manuscript will receive two technical reviews from reviewers selected by editor including review by the JNWRA editorial board. Papers with significant editorial or technical problems will be returned to the authors prior to technical review for revision. JNWRA reserves the right to refuse any paper that it deems technically unsound or that have not adequately addressed the concerns and issues raised by the reviewers or editorial staff.

Manuscripts should be submitted electronically via email to admin@nvwra.org.

Geochemical Evolution of the Carbonate Aquifer in Eastern Nevada

ERIC J. SMITH, U.S. Geological Survey, 333 W. Nye Lane, Room 203, Carson City, NV 89706 (ejsmi@usgs.gov);

DAVID L. NEWLANDS, Department of Geology, University of Nevada, Reno, 123 Someplace Road, Reno, NV 87654 (dlnew@unr.edu)

ABSTRACT

This is the abstract of the paper. It is a concise summary of the essential information contained within the paper. The abstract should avoid expressions such as "is discussed" or "is described" and should focus on the main points and results discussed in the paper.

Keywords: journal, submission, guidelines

INTRODUCTION

This section, the background of the study, including purpose and objectives, may be discussed. Provide adequate information to help the reader understand the setting, history, and goals of the study. However, try to keep the paper focused on your results, not what was done prior to your study.

Subheading

Subheadings should appear within sections denoted by headings. The title should be 12-pt font and bolded.

Tables and Figures

Tables and figures should be numbered in sequence of appearance in the paper. All tables should have titles at the top left of the table, including table number. The table title should be 12-pt font size and the table number should be in bold characters. Tables should be embedded in the text following first mention (Table 1).

Table 1. Geochemical constraints used in the model.

Data Set	Measurement 1	Measurement 2	Average
1	15	19	17
2	49	43	46
3	82	84	83

Figures also should be embedded in the text following the paragraph or page of first mention. The figure caption should be placed below the figure, centered, using 12-pt font size and bold characters for the figure number. Figures should be clear, with dark lines and readable labels (Figure 1). Photos may be used and should be labeled in a similar fashion as figures.

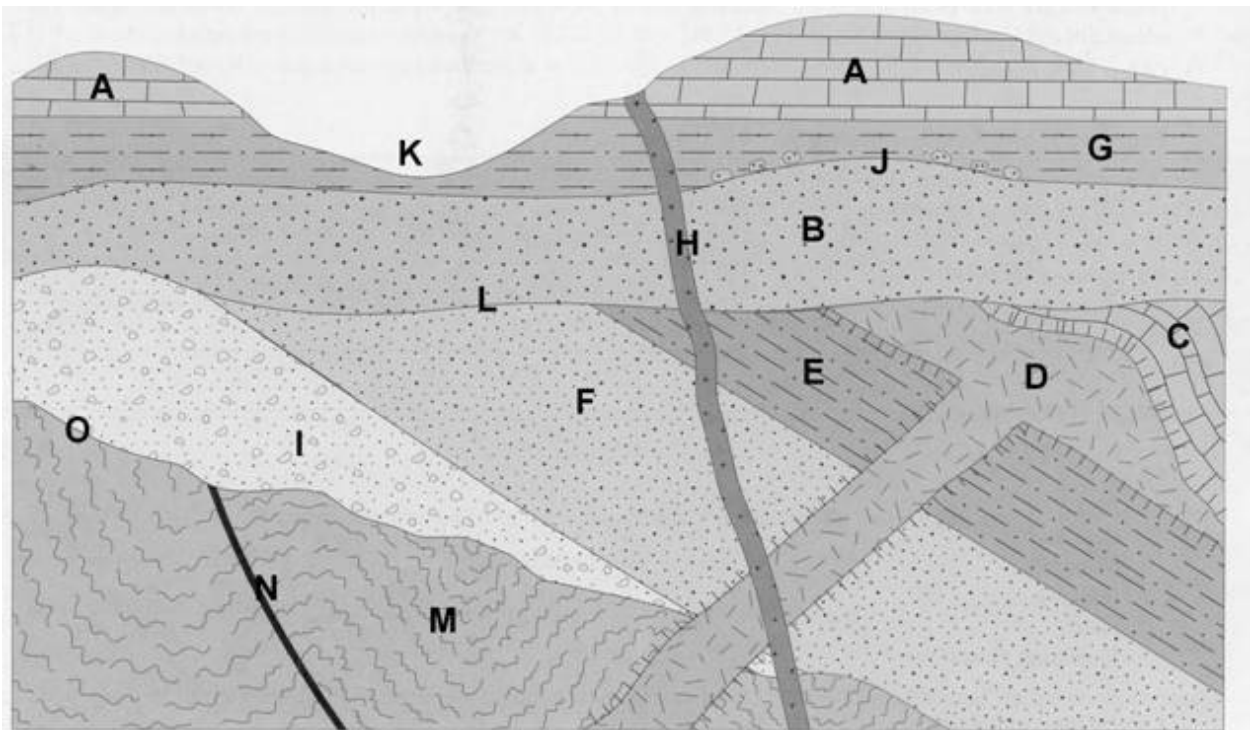


Figure 1: A sample figure detailing the cross-sectional composition of a sample of land.

Note that tables and figures are numbered independently of each other.

REFERENCES

References should be indicated within the text using the insertion of the author's last name and date of publication. If three or more authors are listed for a single publication, then list the first author followed by "et al.," then the date of publication. If two or more citations are to be made with reference to the same idea within the paper, a semicolon should be used to separate the citations. An example of in-text citation is:

"...the geochemical models were proven to be inaccurate (Douglas, 1982). However, other models have provided good estimates of the geochemical evolution (Jones et al., 1992; Jackson and Phillips, 1993)."

References at the end of the manuscript should be listed alphabetically by author's last name (with first and middle initials), followed by year of publication, title, work in which the reference appears, volume, number, and either the first and last pages of the reference or the total number of pages in a book or separate paper. Each reference listed should begin with no indentation on the first line, then 0.3 inch indentation on subsequent lines. Only references cited should be listed in this section. Examples of references are shown below:

Bashley, J.E., and Monler, E.K., 1992, Geochemical evolution within the Madison aquifer: U.S. Geological Survey Water Resources Investigations Report 92-72248, 42 p.

Johnson, D.H., 1945, Geochemistry made easy (2nd ed.): Merrill, Denver, CO, 328 p.

Roberts, F.L., Hagg, C.V., and Edwards, H.K., 1994, My life as a geochemist: Water Chemistry Research, v. 28, no. 13, p. 234-275.

Acknowledgments - Acknowledgments should be made only for significant contributions by the author's professional associates. Acknowledgement of funding sources is also strongly encouraged.

¹ Use of these programs in no way constitutes an endorsement of these or any commercial products. These programs presently are used by the editors and were selected to ensure consistent publication standards for the Proceedings.